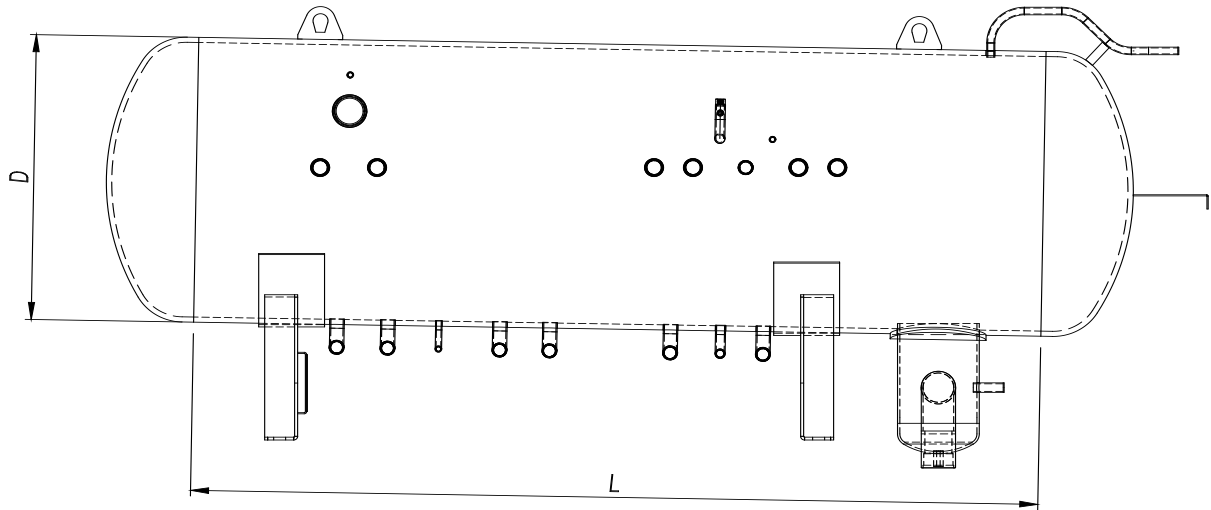


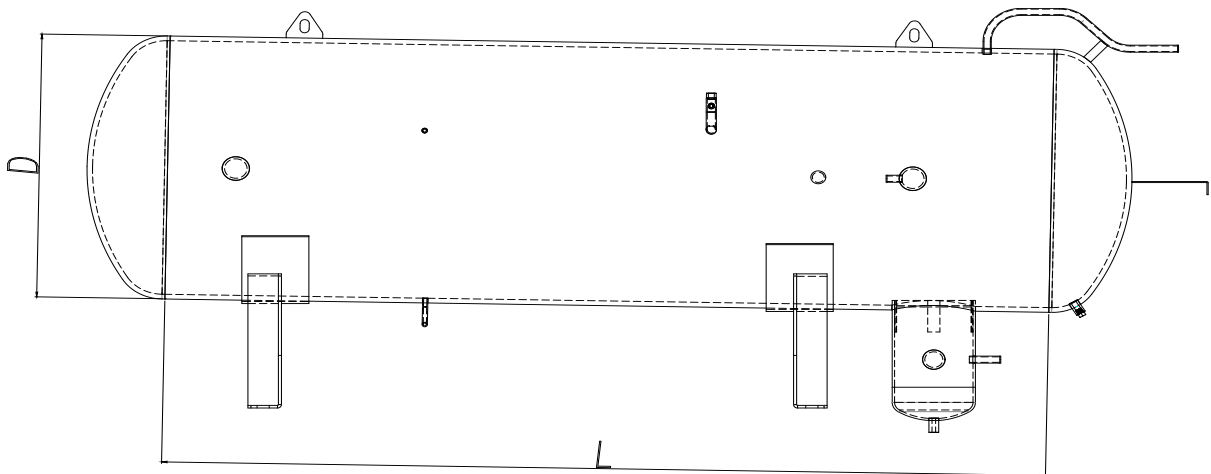


# RCO.1000.45

Ricevitore di CO<sub>2</sub>



*Schema Configurazione 1*



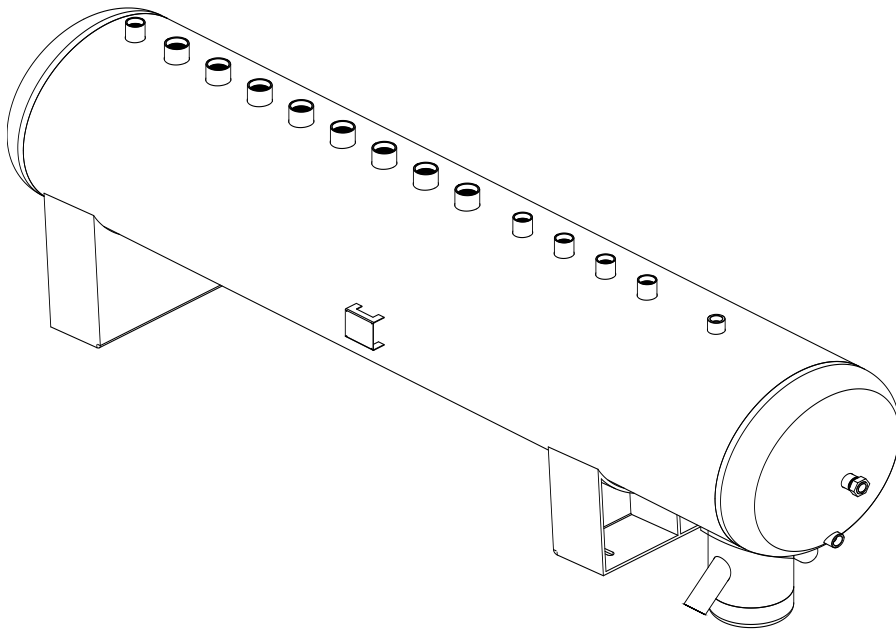
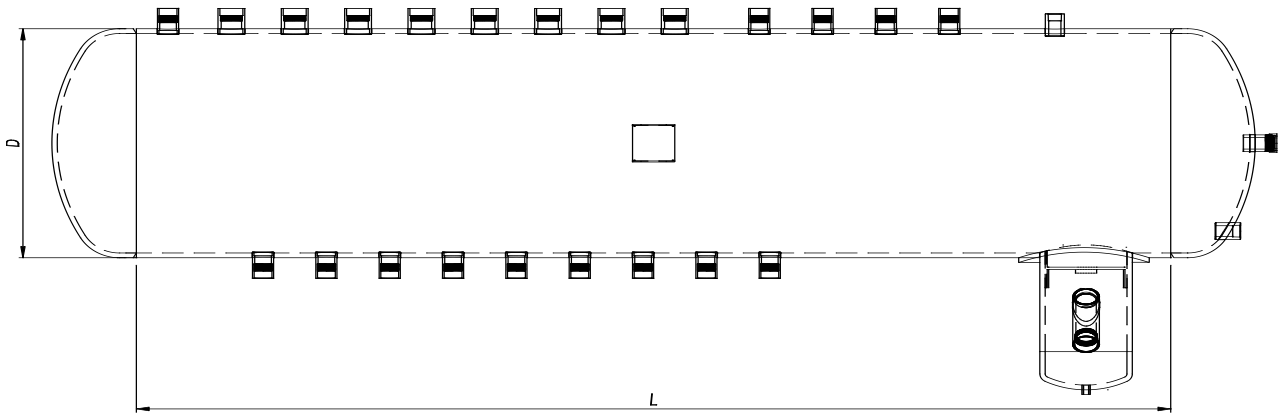
*Schema configurazione 2*

D	L <sub>(mantello)</sub>	Volume	Categoria	Fluido	PS	TS
1000	2500	2140	IV	R744	0/45 bar	- 40 / + 100° C
	2830	2380				
	3500	2870				
	4000	3235				
	4500	3600				
	5000	3965				



# RCO.609.45

Ricevitore di CO<sub>2</sub>

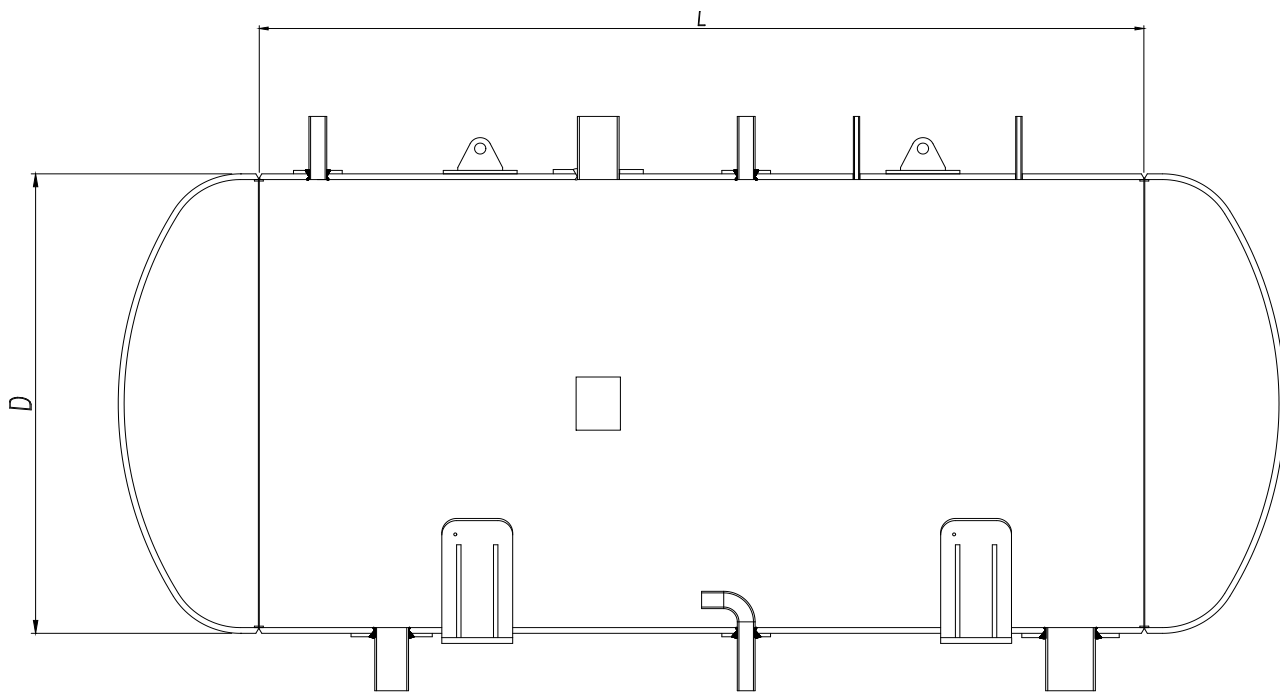


D	L <sub>(mantello)</sub>	Volume	Categoria	Fluido	PS	TS
609	2000	620	IV	R744	0/45 bar	- 46 / + 100° C
	2250	700				
	2500	750				
	2750	830				
	3000	900				



# RCO.1600.40

Ricevitore di CO<sub>2</sub>

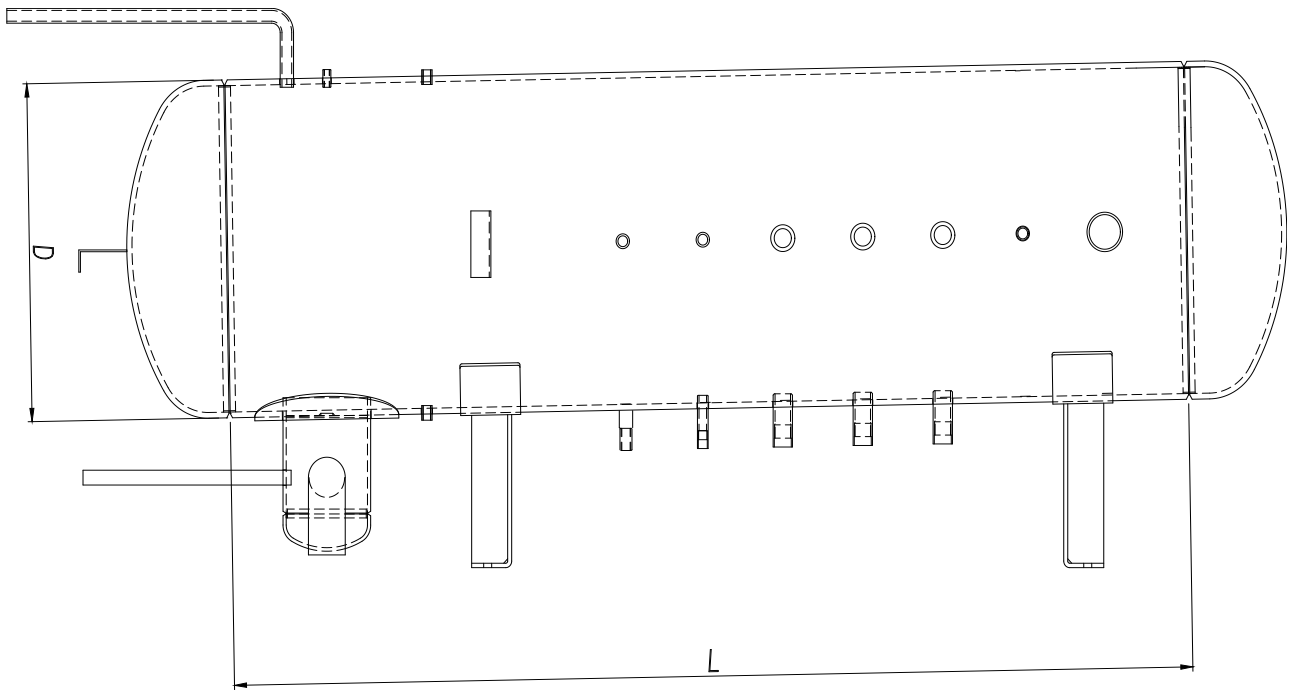


D	L <sub>(mantello)</sub>	Volume	Categoria	Fluido	PS	TS
1600	2500	6015	IV	R744	0/40 bar	- 45 / + 50° C
	3000	7065				
	3500	7920				
	4000	8880				



# RCO.762.45

Ricevitore di CO<sub>2</sub>

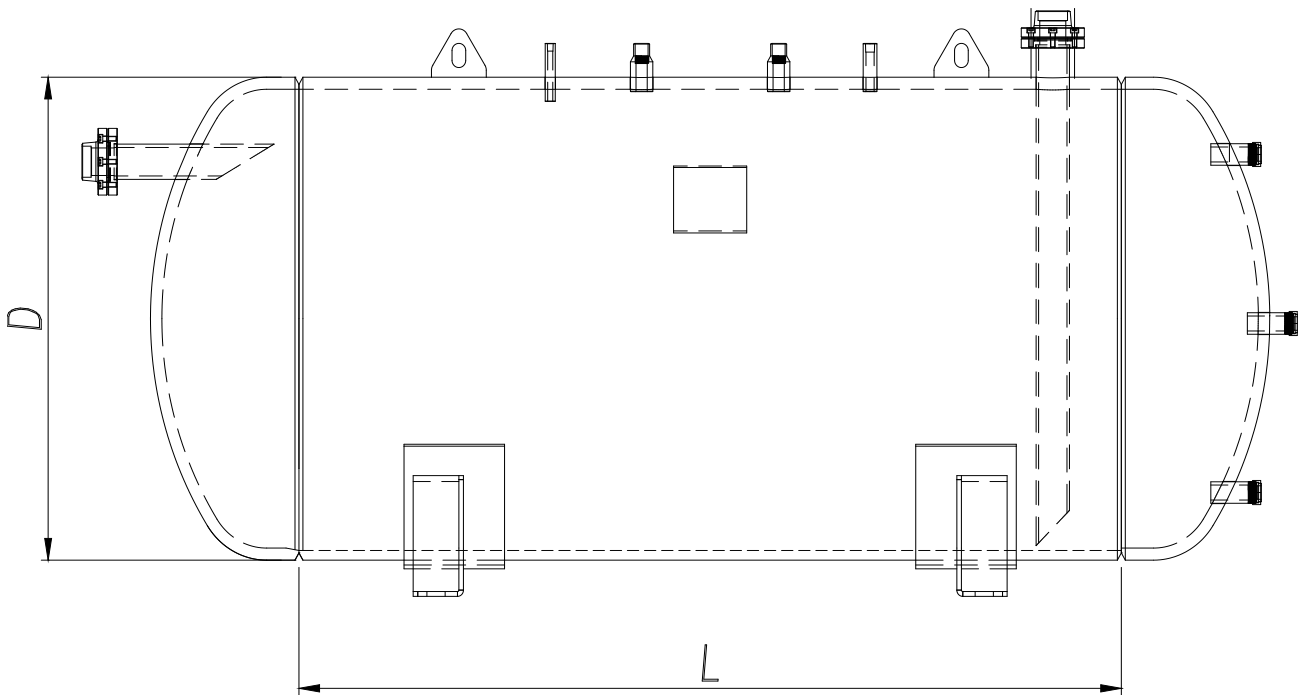


D	L <sub>(mantello)</sub>	Volume	Categoria	Fluido	PS	TS
762	1900	990	IV	R744	0/45 bar	- 10 / + 50° C
	2400	1200				
	2900	1420				
	3400	1650				
	3900	1850				



# RCO.1000.56

Ricevitore di CO<sub>2</sub>



D	L <sub>(mantello)</sub>	Volume	Categoria	Fluido	PS	TS
1000	1800	1600	IV	R744	0/56 bar	- 40 / + 50° C
	2250	1960				
	2500	2140				
	2750	2320				
	3000	2500				
	3250	2680				
	3500	2860				
	4000	3220				